

If you have a vehicle fitted with PEUGEOT Connected 3D Navigation, you can benefit from connected services including Real Time Traffic and SpeedCam.

The services are offered **free of charge for the first 3 years** on new vehicles.

### Step 1:

Visit the PEUGEOT Services Store <https://services-store.peugeot.ie/> and sign in, or create an account. Add your vehicles full VIN number and discover the different services available for your vehicle.

### Step 2:

For navigation, choose the Connected Navigation Pack, combining Real Time Traffic and Speedcam services. Follow the checkout journey to complete your subscription.

### Step 3:

Once subscribed online, check your in-car settings are correct to allow the sharing of data necessary for these services. Have your engine running & wait for the navigation screen to load. Ensure you are in an area with GSM network coverage (for example, avoid underground car parks, etc).

- If you have the Peugeot SOS button, you have an embedded SIM card with data.
- If not, connected services will only run using smart phone data when tethered by WiFi. Please refer to the sheet "Data sharing via smartphone".



Depending on your vehicle the screens may vary.

### Step 4:

Ensure your subscription is recognised by the vehicle by clicking the 'Messages' icon at the top of your navigation screen.

Press 'Connection Service' to see subscription status. If status is not 'Activated' press the globe icon below to refresh.

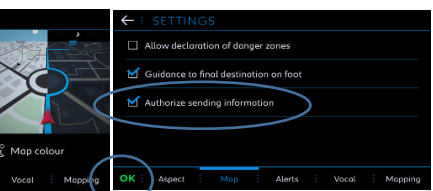
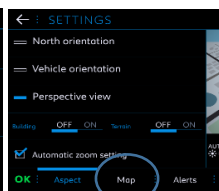
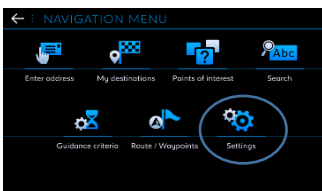
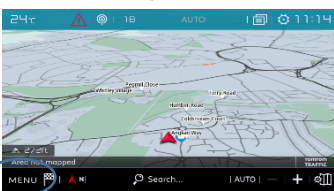
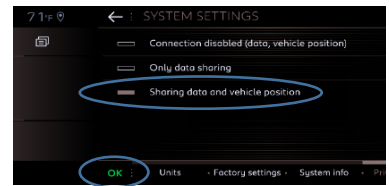
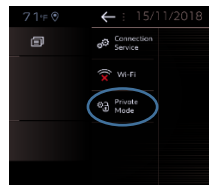
Note: subscriptions are usually active within an hour but can take up to 9 days to be received by the vehicle – driving frequently in GSM coverage areas will usually speed this up.



### Step 5:

Ensure your vehicle is not in private mode, and is therefore authorised to send location data.

This is found either in 'messages', or in navigation settings.



Note: Data sharing can be switched off at any time on these screens, but connected services will not be able to operate.

### Step 6:

Confirm in the Connection Service screen (from step 4) that your services are now showing as both 'Activated' and 'Available'.

If so, you will also now see 'TomTom Traffic' displayed on the bottom right hand side of your navigation screen.

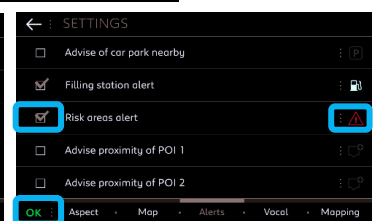
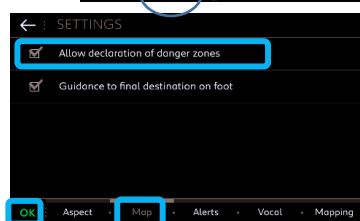
Using the icon immediately below 'TomTom Traffic', you can decide what you want to be displayed on the screen as standard.



### Step 7:

On the navigation screen click on "Menu" then on 'Settings'. Select the 'Map' tab, tick 'Allow declaration of danger zones' (Speedcams) and confirm by pressing 'OK'.

From the 'Alerts' tab, select 'Risk areas alerts'. Then click on the warning triangle icon to set the alerts. Confirm by pressing 'OK'.



Your Connected 3D Navigation will now show real time traffic and information including parking availability & pricing, fuel pricing, weather & updated Point Of Interest searches – as well as speed and traffic camera information.

Should you have any trouble in activating your services, please follow the Troubleshooting guidance at the bottom of the PEUGEOT Services Store.